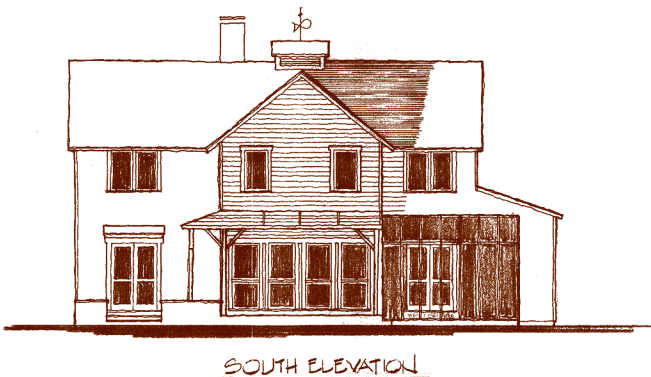
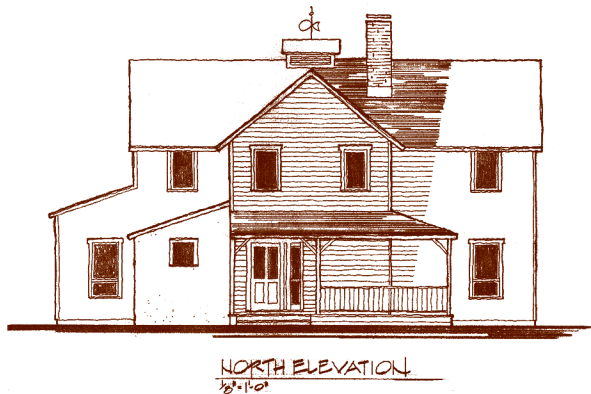
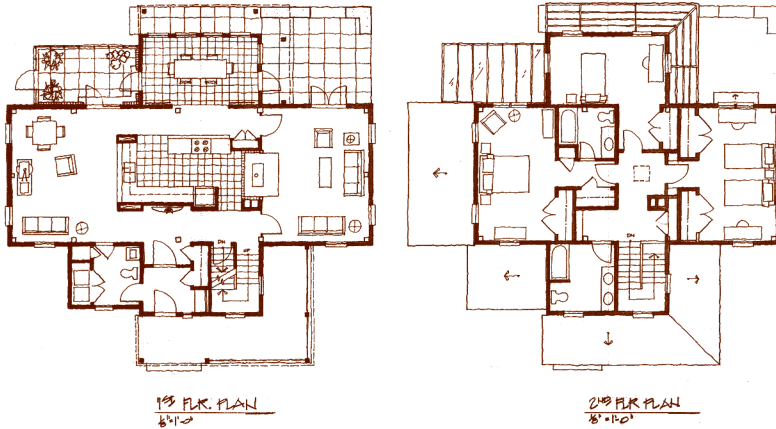




Eco Collection: Sunhouse



Description: Approx. 1973 sf, the Sunhouse is designed for comfortable, passive solar living. Features three bedrooms, two and a-half baths, open floor plan with large dining area and multiple seats at the kitchen counter, away room, and sunspace. The flexible first floor plan can accommodate a fourth bedroom/master suite.

- Hybrid timber frame and SIPS construction
- Superior wall foundation; R-5
- Large eave overhangs allow winter sun in and block summer sun
- Natural ventilation through automatic temperature sensitive cupola
- South facing sunspace, dining area and patio act as heat sinks, absorbing the sun's heat in winter and radiating it into the house.
- Protected front entry reduces drafts
- High recycled/fly ash content concrete reduces landfill waste
- Highly reflective metal roofing reduces heat load
- Energy Star Wood Windows; U value of at least .33
- Reclaimed flooring and trim
- Radiant floor heating increases comfort and efficiency
- Geothermal heating and cooling decreases operating costs
- High efficiency air conditioning units decrease operating costs
- Low/No VOC paints and adhesives for a healthy environment
- Energy Star Lighting and Appliances
- Porches shade house in heat of summer to reduce cooling load
- Rainwater capture system for irrigation and toilet flushing